

Installation Manual

ReLANpro Digital Language Studio



MANUAL INDEX:

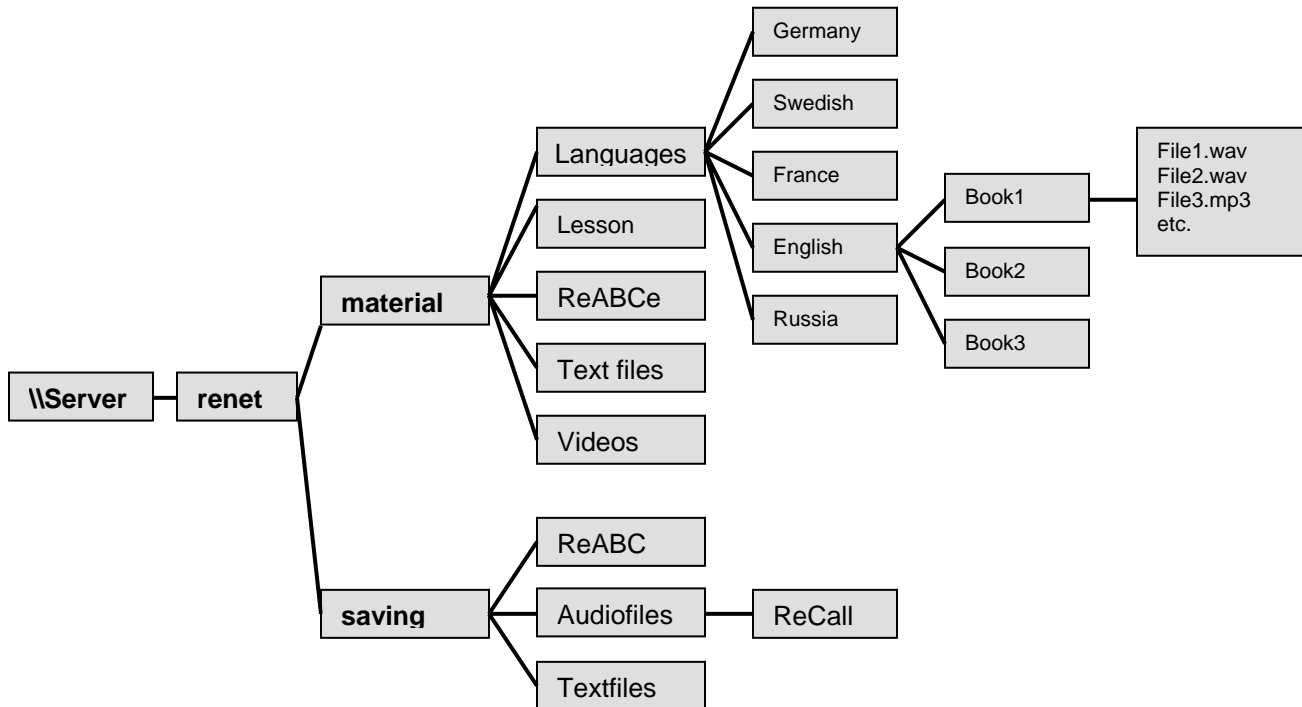
1. INSTALLATION	3
1.1 SERVER FOLDER STRUCTURE AND PERMISSIONS	3
1.2 RELANPRO PROGRAM INSTALLATION.....	3
1.2.1 Installing student workstations	3
1.2.2 Installing teacher program.....	4
2. PROPERTIES.....	4
2.1 RELANPRO HIDDEN PROPERTIES	4
2.1.1 Default saving path.....	4
2.1.2 CTRL-ALT-DEL Combination.....	4
2.1.3 ReEsto Protection	5
2.1.4 Renet-program updating	5
2.1.5 Defining sound mixer profiles.....	5
2.2 DEFINING LANGUAGE LIBRARY AND PATHS.....	6
2.2 DEFINING LANGUAGE LIBRARY AND PATHS.....	6
2.3 ADJUSTING VOLUME USING RECALL.....	7
ATTACHMENT 1: RELANPRO PROGRAM FILES.....	8
ATTACHMENT 2: PORTS USED AND REQUIRED IN RELANPRO	9
ATTACHMENT 3: HIDDEN SETTINGS AND WINDOWS	10
ATTACHMENT 4: RECALL PAIR CONFERENCE.....	11

1. INSTALLATION

1.1 Server folder structure and permissions

In order the program to function correctly there should be applicable the folder structure and the correct permissions for accessing and writing files.

Example of the applicable folder structure:



- Teacher workstation should have read and write permissions to Material and Saving folders.
- Student workstation should have permission read the files from Material folder.
- Student workstation should have permission writing files to Saving folder.

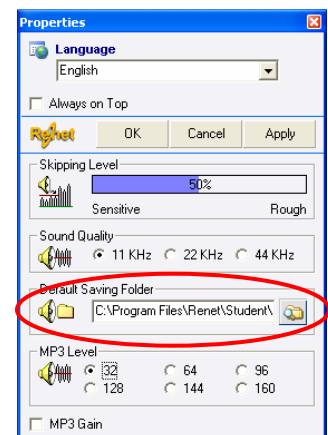
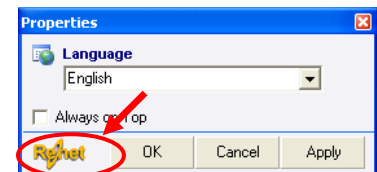
1.2 ReLANpro program installation

1.2.1 Installing student workstations

Student workstations should be logged in with the permissions of administrator or power user. Student program can be installed from network drive or folder double clicking and executing the **ReLANpro (*.**).exe** program file and selecting the student installation from the installation options.

In the student workstations ReRec-virtual recorder settings can be defined the path where the student files will be saved. Student programs should have the permission to read and write files to the "Default Saving Folder". The default saving folder of the ReRec program is Windows "My Documents" - folder of the active user profile. The folder can be changed from the program properties. As a default the student recorder advanced program properties are hidden and can be unhidden pressing with the mouse **right** button on top of the Renet-logo in the "Properties" -window for three (3) seconds.

The student stations should also have permissions to save and read from the pair and group conference (ReCall) saving folder.



1.2.2 Installing teacher program

Teacher workstation should be logged in with the permissions of administrator or power user. Teacher program can be installed from network drive or folders double clicking and executing the **ReLANpro (*.**).exe** program file and selecting the teacher installation from the installation options.

2. PROPERTIES

2.1 ReLANpro hidden properties

As a default the teacher program advanced properties are hidden and can be unhidden pressing with the mouse **right** button on top of the Renet-logo in the "*Properties*" -window for three (3) seconds. After the three seconds there will appear new tab after the "*Broadcast*"-tab. In this installation tab you can define the language studio hidden properties.

IN ORDER TO ENABLE ANY CHANGED SETTING IN THE STUDENT STATIONS REQUIRES THE STUDENT STATIONS TO BE ACTIVE AND SELECTED.

(All active student stations can be selected from the teachers program double clicking in an empty area of the classroom).

2.1.1 Default saving path

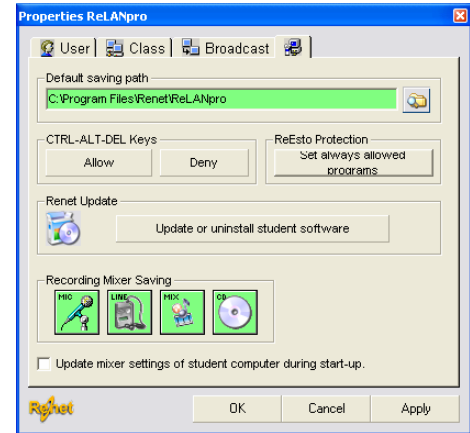
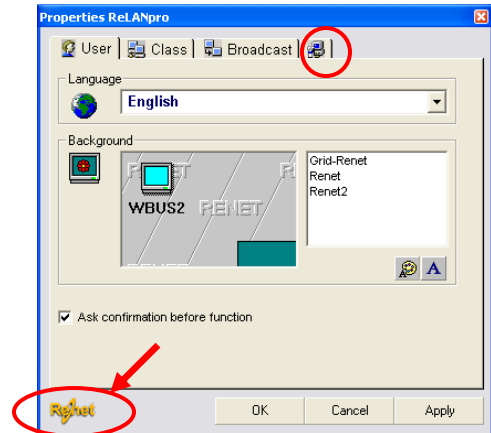
When "Default saving path" -folder is coloured red the saving path and sub paths do not exist in the specified folder. Once the path is specified to the server (\\server\renet\saving) program creates the required sub folders automatically.

Once program "Default saving path" has been defined correctly and all the required sub-folders have been created to the server the folder selection area is marked green instead of red.

2.1.2 CTRL-ALT-DEL Combination

The student workstations can be denied the access to the *CTRL-ALT-DEL* combination selecting the "Deny" from the "*CTRL-ALT-DEL Keys*" -area.

This disallows the students to disable the Renet programs processes such as locks and not allowed programs specified teacher or system administrator in the hidden properties window.



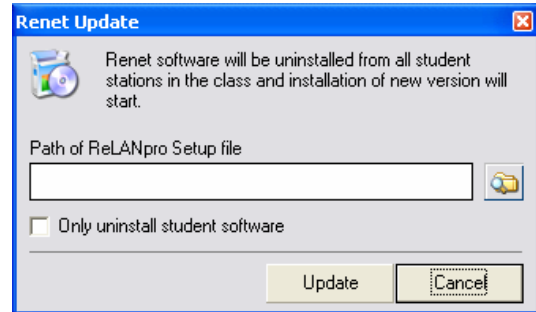
2.1.3 ReEsto Protection

A ReEsto function allows the system administrator specify the programs that are always allowed to be used during the lecture. The ReEsto can be set directly after the installation of the student programs. In order the ReEsto to block access to the only intended programs the allowed programs (example virus scanners) should be active or open in the selected student stations when selecting "Set always allowed programs"-button.

2.1.4 Renet-program updating

The updating of the teacher program is done by uninstalling the teacher program from the local computer and installing the new version from network drive or folder. The installation can be start double clicking and executing the **ReLANpro (*.**).exe** program file and selecting teacher installation from the installation options. In the program updating all the previous settings such as profiles, classroom settings and flags remains intact.

The update of the student stations is done by selecting the path of the ReLANpro setup file from the "Renet Update" window. The setup file should be placed in network drive or folder that is accessible from the student stations and the student stations have permission to write to the update folder.

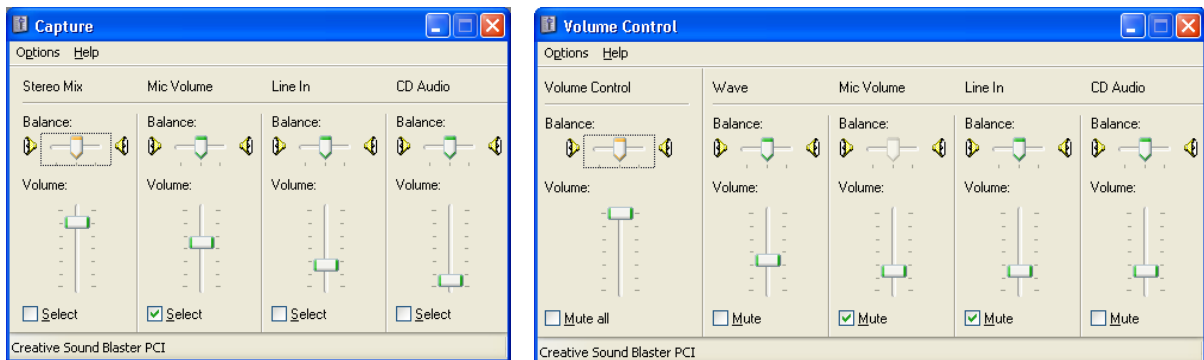


2.1.5 Defining sound mixer profiles

In the reinstallation of the program or installing new soundcard the sound mixer settings should be redefined in case the "Record mixer saving" buttons in the "hidden properties" window are coloured red instead of correctly defined green colour.

The defining of the sound mixer profiles is done by opening Windows "Volume Control" window and setting first the Microphone volume from the recording control and pressing the "MIC" button under "Record mixer settings" in the "hidden properties" window. Similar ways are defined Line In, CD player and Stereo Mix settings.

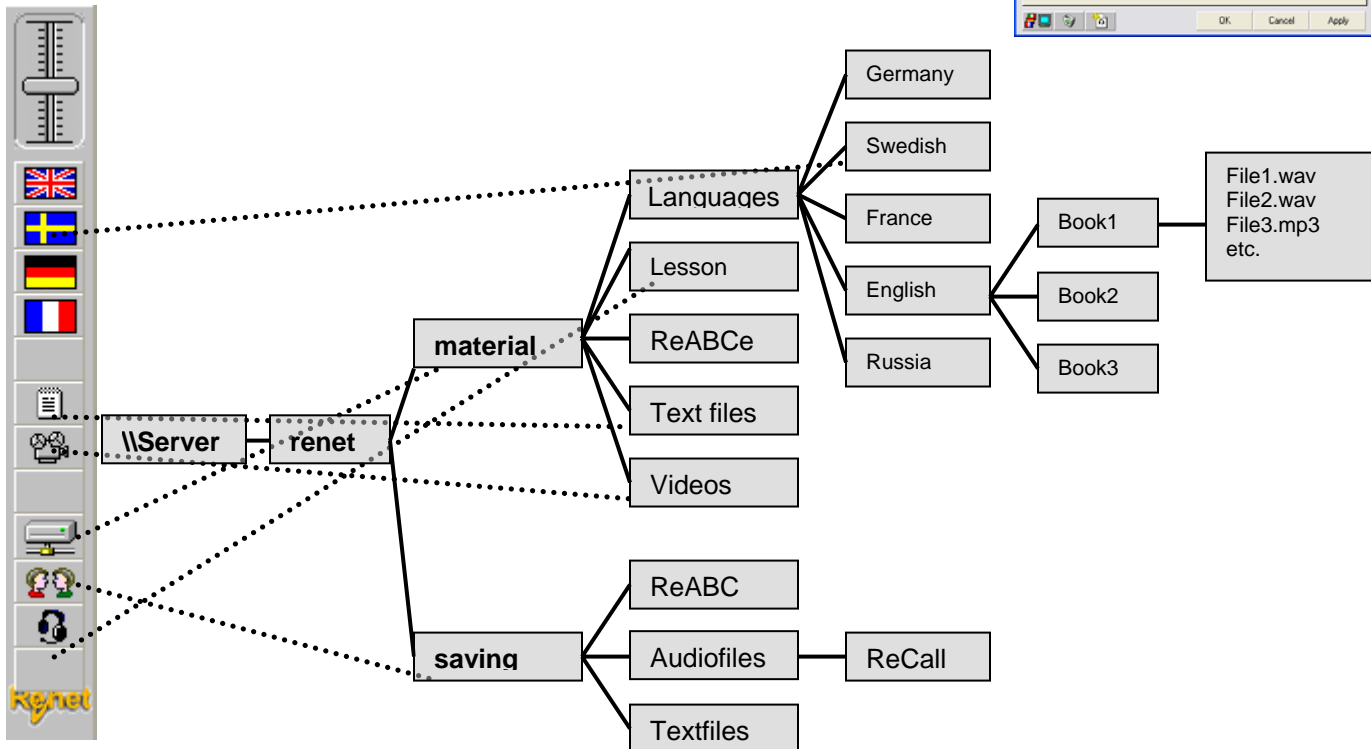
Below is example where the microphone settings have been set the Mic Boost, the main Volume Control is set 75% and the Microphone is set 80% of maximum.



2.2 Defining language library and paths




In the teacher program user interface left side includes the language library flag buttons. These buttons allow the teacher to have easy access to the studying material and saving files to the network folder. Flags can be defined pressing the mouse right click on top of the flag or empty flag icon and selecting from the opening window desired flag icon and specifying the folder path.

Example of the flag library and folder location:



In the teacher program in the first time all the paths that will be used during the defining will stay as the default path for the next time.

NOTE: All the paths should be defined using the path selection tool

-  Open the **ReABC-program** and set the material path to "\\Server\Renet\Material\ReABC"
-  "Select path" –button
-  "Save path" –button can be used to define the path where the student answers will be saved. Example "\\Server\Renet\saving\ReABC"



In order the student recording would function correctly it should be tested with recording and saving once the file. The teacher administration panel can be used to set the selected student workstation into recording



pressing the "Record"-button. Once the recording has stopped the file can be saved using the save button and selecting the path for the default saving to "\\Server\Renet\Saving\Audiofiles".



ReWrite text editor path can be defined pressing the save button and selecting for the path: "\\Server\Renet\Saving\textfiles"



Analogue audio saving path is set to "\\Server\Renet\Material\Oppituntti"

2.3 Adjusting volume using ReCall

Student workstation group conference ReCall has hidden volume settings similar to the other Renet programs. The hidden settings window can be unhidden pressing with the **mouse right** button on top of the Renet-logo in the "Properties" -window for three (3) seconds. A hidden window opens on the right side of the program with settings button.

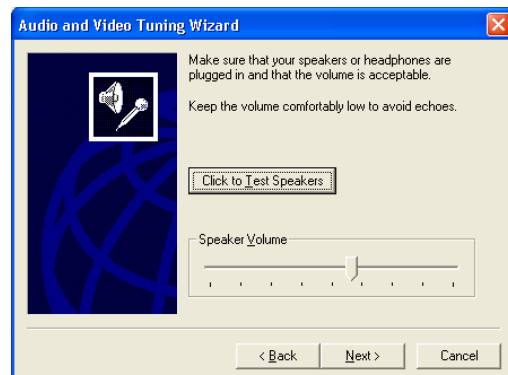
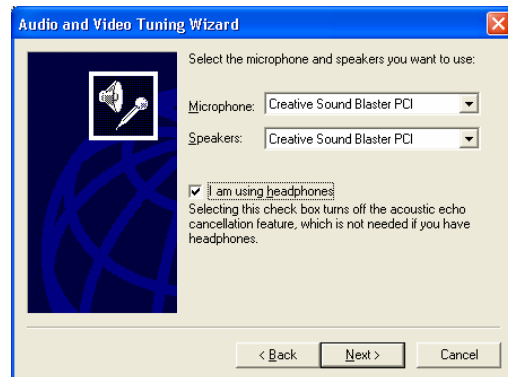


Pressing the settings button allows adjusting the sound settings for the microphone and the speakers.

In the most case in the settings the "I am using headphones" should be selected for the sound heard from headphones to be clear to listen.











The volume strength and microphone can be tested following the instructions in the "Audio and Video Tuning Wizard".

The adjustments affect to the sound level and the settings used in ReCall and in Windows. Adjusting "Speaker Volume" level affects to the "Windows built in Volume Controller - Master Volume" and the "Microphone Volume" setting affects to "Windows built in Recording Controller - Microphone" settings.


















Attachment 1: ReLanPro program files

A) Teacher programs:

 ABCreate2.exe	536 KB	Application	9.6.2005 9:54
 Lame.exe	288 KB	Application	20.10.2003 10:57
 ReAction2.exe	308 KB	Application	12.12.2003 12:34
 ReDigi.exe	804 KB	Application	9.6.2005 11:44
 ReExam2003.exe	460 KB	Application	5.9.2003 14:01
 ReLan2.exe	3 260 KB	Application	9.6.2005 9:57
 ReMess.exe	188 KB	Application	13.3.2002 13:40
 ReUpdate.exe	28 KB	Application	17.11.2003 15:18
 TCall.exe	104 KB	Application	28.5.2003 12:57
 TRec.exe	56 KB	Application	1.4.2004 11:01

B) Student programs:

 AudioTalk.exe	200 KB	Application	28.5.2003 14:19
 Esto2003.exe	108 KB	Application	24.8.2004 14:02
 Gain.exe	129 KB	Application	9.1.2005 2:58
 Lame.exe	288 KB	Application	20.10.2003 10:57
 ReABC.exe	488 KB	Application	19.4.2005 15:31
 ReAction2.exe	308 KB	Application	12.12.2003 12:34
 ReCall2.exe	364 KB	Application	29.4.2005 13:08
 ReCmd.exe	45 KB	Application	30.3.2005 10:41
 ReKuva.exe	56 KB	Application	23.12.2003 13:22
 Rep.exe	20 KB	Application	4.12.2003 14:54
 RePhone.exe	92 KB	Application	1.4.2005 11:01
 ReRec.exe	2 212 KB	Application	9.6.2005 14:17
 ReUpdate.exe	28 KB	Application	17.11.2003 15:18
 ReUser2.exe	52 KB	Application	3.5.2005 13:19
 ReWrite.exe	132 KB	Application	19.4.2005 13:16

Attachment 2: Ports used and required in ReLanPro

Renet (ReLAN Pro v. 2.x) language studio use UDP and TCP ports for communication. The list and the nature of the ports are shown below.

4108 variable in multiple class environment (4108-4363) *
4109 variable in multiple class environment (4109-4364) *
4365 constant
4364 constant
4621 constant
4620 constant
5133 constant
5132 constant
5389 constant
5388 constant
3909 constant
3908 constant
4009 constant
4008 constant
3843 constant
3842 constant
4620 constant
4619 constant
3843 constant
3842 constant
3653 constant
3652 constant
5900 variable in multiple class environment (5900-6156) *
8080 constant

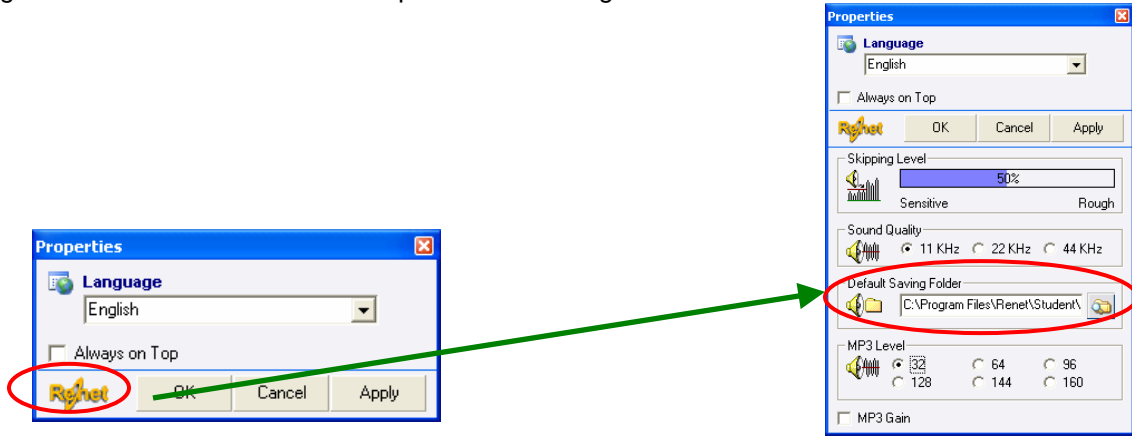
*Variable ports are used when multiple Renet language studio teachers programs are used at the same local area network. In all other case the ports are constant.

In addition to these ports for broadcasting digital audio over local area network the program automatically opens one random UDP port.

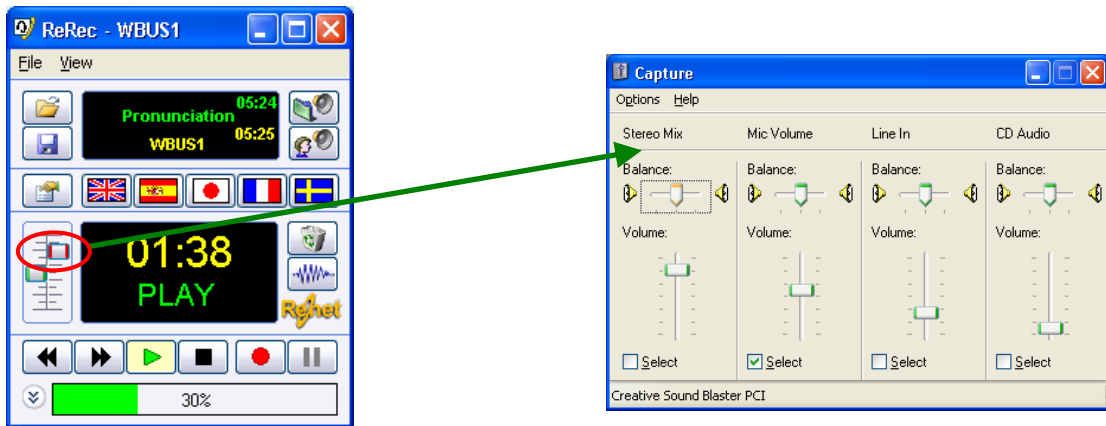
Attachment 3: Hidden settings and windows

1. ReRec recorder:

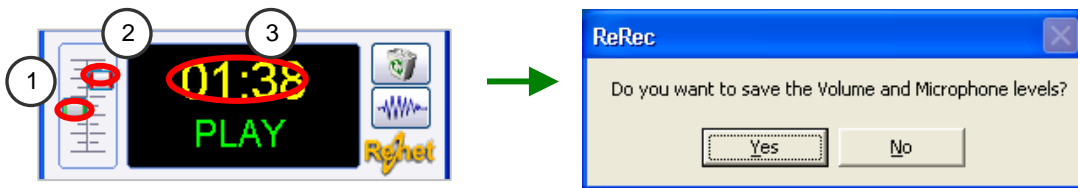
A) Virtual recorder hidden settings can be opened selected properties and holding the mouse right button for three seconds on top of the ReNet logo.



B) The windows capture control window opens with a double clicking on top of the volume controller.



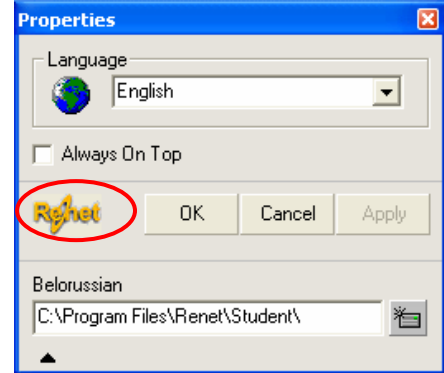
C) The playback volume level and recording volume level can be saved clicking with the mouse left button first clicking on top of the playback volume button, second clicking on top of the recording volume button and third double clicking on top of the playback time area.



Attachment 4: ReCall pair conference

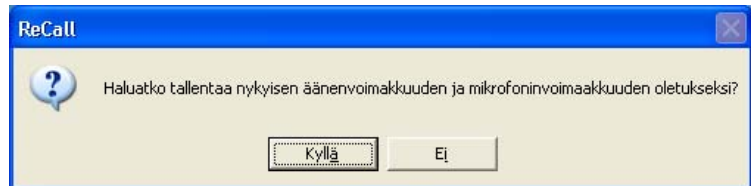
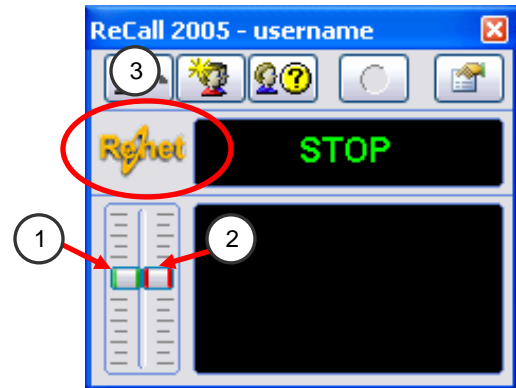
A) Properties hidden window

The hidden window of the path can be defined by pressing mouse left button on top of the Renet-logo for three seconds. After three seconds there opens hidden window below the properties window with option to define the path for the student files.



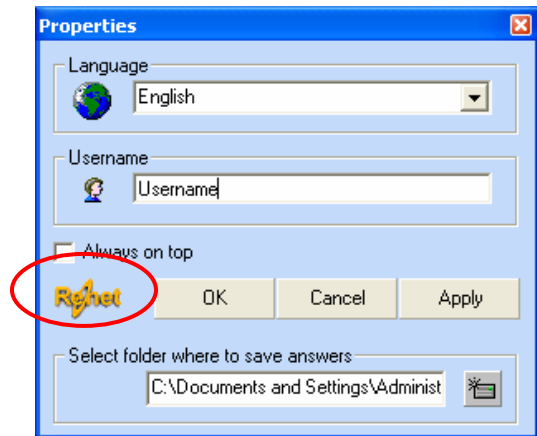
B) Saving recording and volume level

Recall recording and volume level settings can be saved with first clicking once at the volume button, second microphone recording volume button and third double clicking at the Renet logo. In the newer version of the Renet ReCall program the volume settings can be saved with double clicking on top of the Renet logo.



3. ReABC Multiple selection options

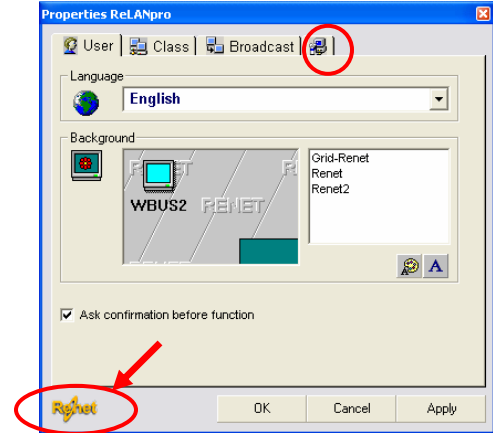
The folder where the student answers will be stored in the ReABC can be defined in the hidden window below the properties window. The hidden window can be opened by pressing the mouse left button on top of the Renet logo for three seconds.



4. Teachers program

A) Properties hidden window

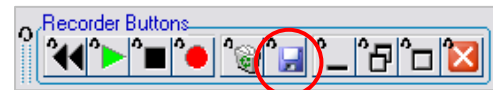
As a default the teacher program advanced properties are hidden and can be unhidden pressing with the mouse **right** button on top of the Renet-logo in the "Properties" -window for three (3) seconds. After the three seconds there will appear new tab after the "Broadcast"-tab you can define the language studio hidden properties. The hidden shortcut opens the "adjustable spanner" tool for editing the classroom outlook and position of the teachers' desktop on the right side of the classroom.



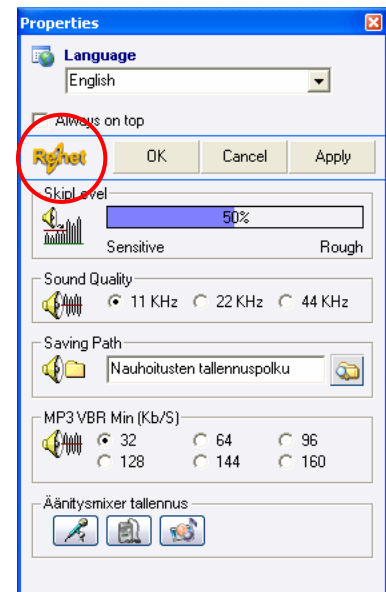
B) The registration window can be opened with double clicking on top of the Serial number in the "About ReLANpro"



C) From the teachers' program can be directly accessed to the Windows Explorer for selecting files with pressing right click on top of the save icon in the recorder instruction buttons. Same function is available in the text editors' instruction buttons.



D) Teacher's ReDigi hidden window can be accessed pressing mouse right click for three seconds on top of the Renet-logo, with the hidden settings opening below the recorder program. In the hidden settings the sound quality, saving path and other details can be defined for the ReDigi program.



E) The "adjustable spanner" tool for editing the classroom outlook and other features can be opened double clicking on top of Renet logo locating on the left side of the teachers' desktop.